

# **AEROPRAKT**

## **SAFETY ALERT**

**No. SA A32-03**

### **REPLACEMENT OF DOOR LATCHES**

**Repeating symbols:**

Please, pay attention to the following symbols throughout this document marking important information.

- ▲ **WARNING:** Identifies an instruction, which if not followed may cause serious injury or even death.
- **CAUTION:** Denotes an instruction, which if not followed, may cause severe damage.
- ◆ **NOTE:** Information useful for better handling.

**Release date: 16.03.2018**

**Effective date: 16.03.2018**

**Completion date:**

**Superseded notice: none**

**Model: A32, A32L**

**Serial number(s) affected: A32: from 001 to and including 028**

**A32L: from 001 to and including 002**

**1) Planning information****1.1) Aircraft affected**

Aeroprakt-32 airplanes, S/N from 001 to and including 028 and Aeroprakt-32L airplanes, S/N from 001 to and including 002.

**1.2) Reason**

It was discovered that the doors may open in flight.

**1.3) Subject**

Door latch levers and stops.

**1.4) Compliance**

Compliance with this Safety Alert must be ensured after its publication prior to flying!

**1.5) Approval**

The technical content of this Safety Alert has been approved by Aeroprakt.

**1.6) Manpower**

Estimated man-hours: replacement of old parts for new ones can be carried out within 4 hours.

**1.7) Mass data**

Mass change – insignificant +70 grams.

**1.8) Revision of other documents**

None.

**1.9) Spare parts**

Modification parts kits are supplied by local dealers.

**2) Spare parts information****2.1) Spare parts cost**

Cost of the replacement parts kit – door latch lever assemblies (left and right), stops (left and right), doublers (2 pcs.) and fasteners – is supplied free of charge to the local dealer office.

**2.2) Special tools / consumables**

For replacement: Ø3.1 mm drill bits, hand drill, Clico fasteners, pop-riveter, Allen key.

**3) Accomplishment / Instructions**

▲ **WARNING:** Failure to comply with this SA may cause door opening in flight.

**3.1) Removal of old latch lever and handle** (fig. 1, 2)

◆ **NOTE:** Replacement must be done for both left and right doors.

3.1.1 Undo the screw (1) using Allen key.

3.1.2 Remove the handle (2).

3.1.3 Remove the latch lever (3).

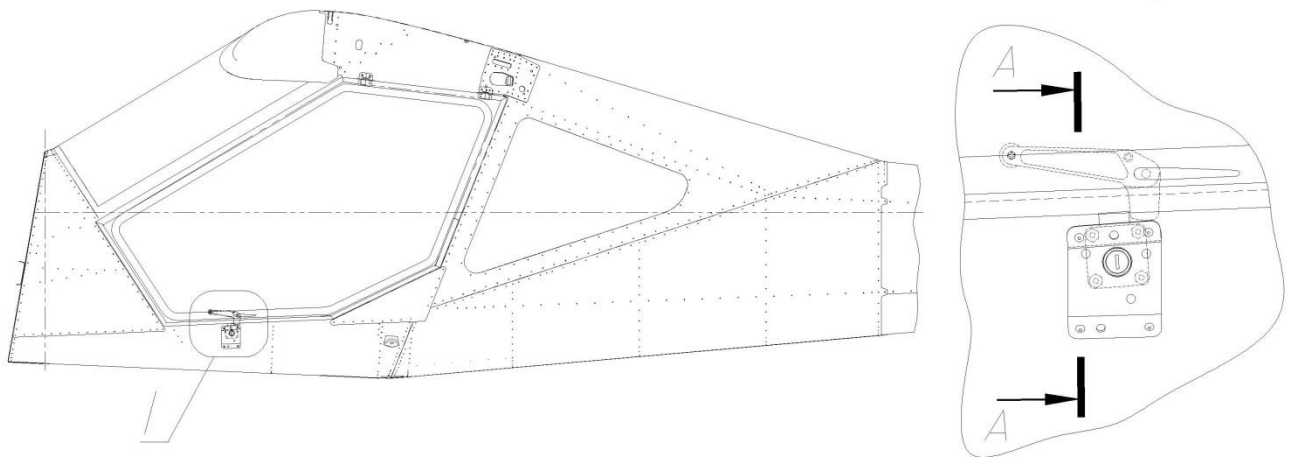


Fig. 1

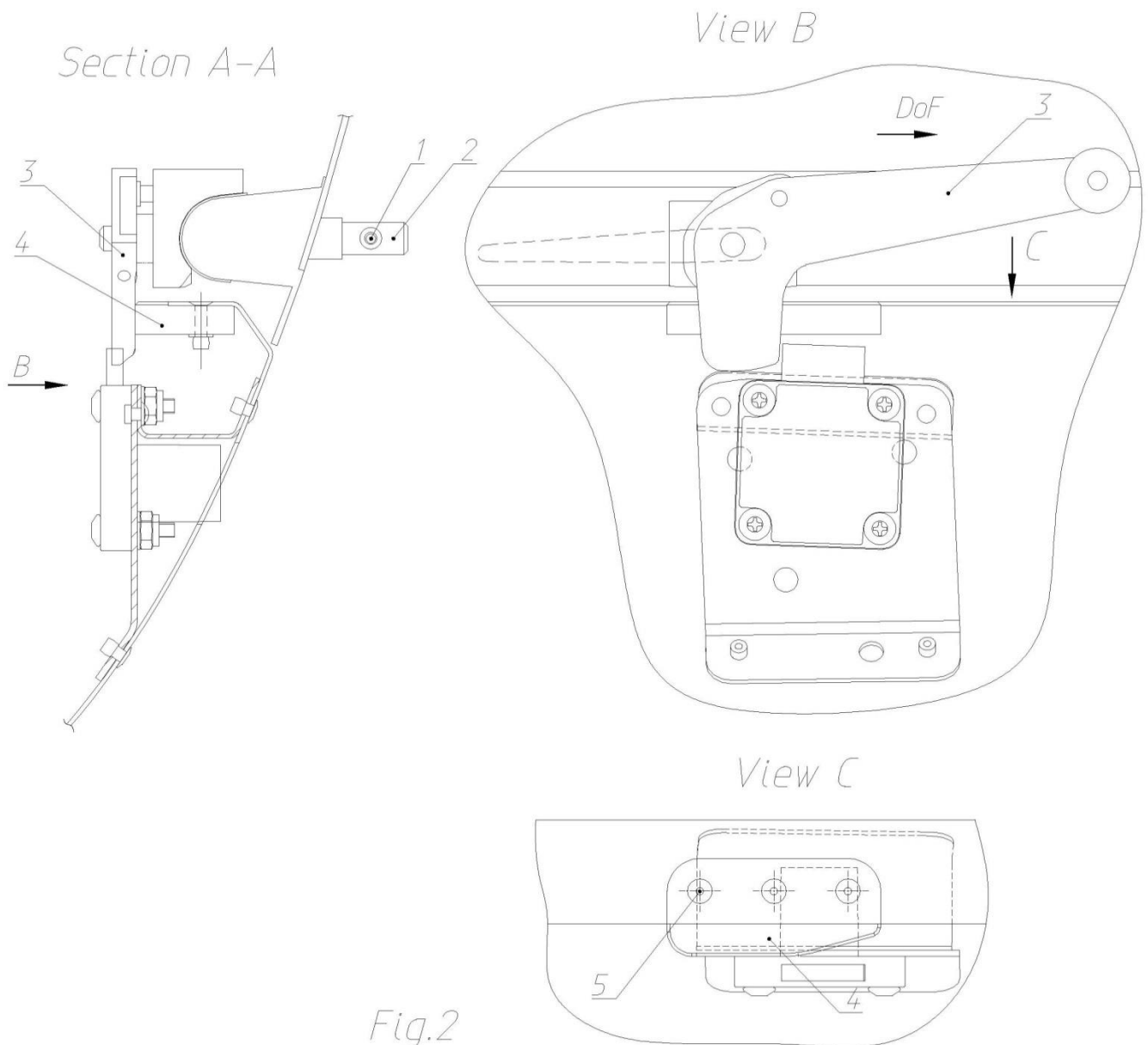


Fig. 2

### 3.2) Removal of the old latch stop (see fig. 2 above)

- 3.2.1 Drill out with  $\varnothing 3.1$  mm bit the rivets (5) attaching the stop (4).
- 3.2.2 Remove the old stop (4).

**3.3) Installation of the new latch stop (see fig. 3)**

- 3.3.1 Install in place the new stop (7) aligning it with latch lever axle. Check dimension  $18^{+1}$  mm.  
 3.3.2 Mark holes for the rivets No. 9 and 10 on the new stop (7), using the holes in the beam and drill them with  $\varnothing 3.1$  mm drill bit.  
 3.3.3 Install in place the doubler (8) aligning it with the new stop (7). Check dimension 2 mm.  
 3.3.4 Mark holes for the rivets No. 9 and 10 on the doubler (8), drill them with  $\varnothing 3.1$  mm drill bit.  
 3.3.5 Countersink the holes in the doubler for flush rivets.  
 3.3.6 Drill  $\varnothing 3.1$  mm holes for the rivet No. 11 and 12 (on Section D-D and E-E respectively) in fuselage and new stop using the pilot holes in the doubler.  
 3.3.7 Mark and drill the  $\varnothing 3.1$  mm hole for the rivet No. 11 shown on View K.  
 3.3.8 Attach the new stop and doubler with rivets No. 9, 10, 11, 12 and washers No. 13.

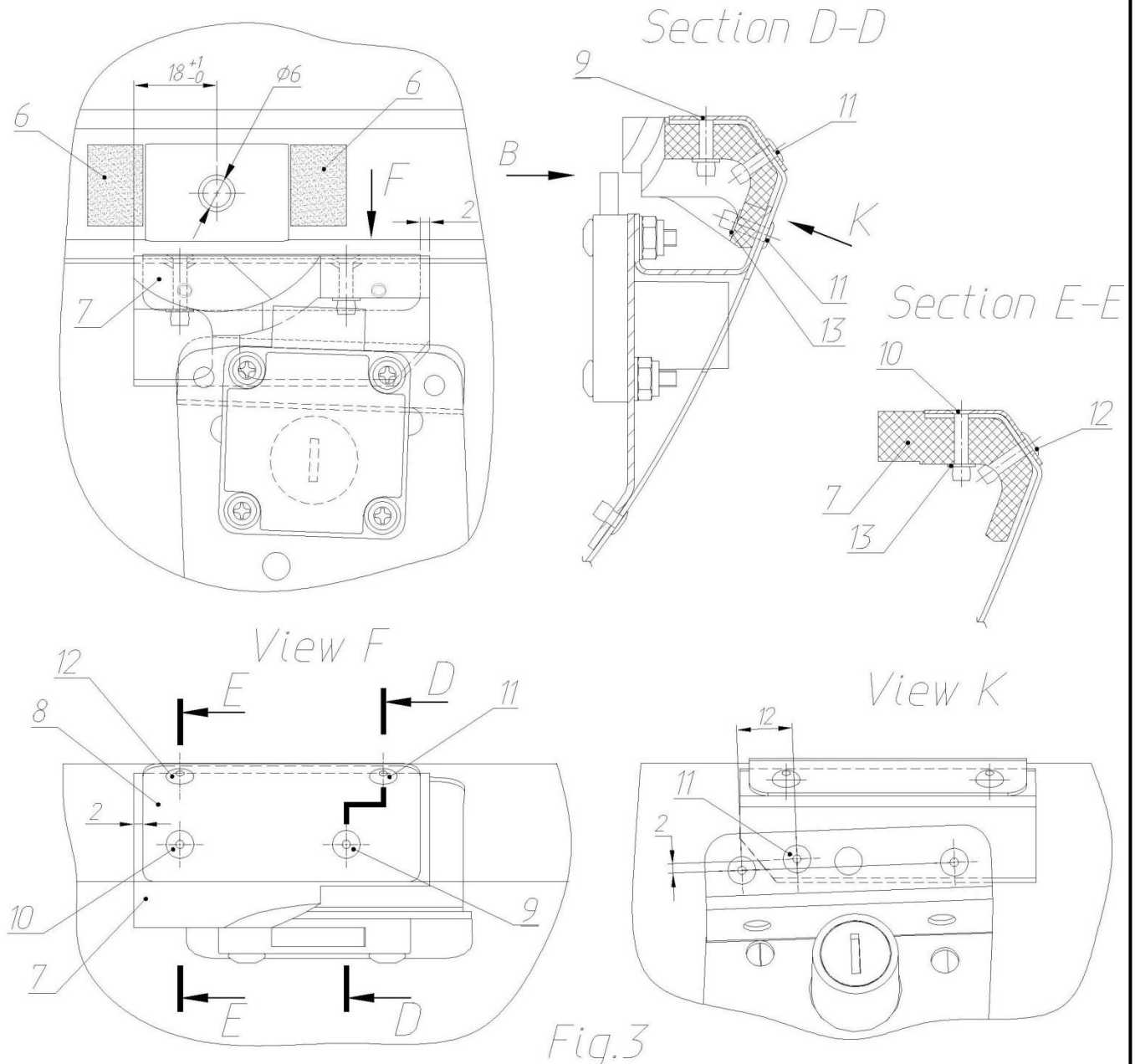


Fig.3

**3.4) Installation of protective film on the door under the new latch stop (see fig. 3)**

- 3.4.1 Remove the film covering the sticking layer of the protective film (6) and install it on the door on the left and right of the steel doubler.

**3.5) Installation of the new latch lever with hook (see fig. 4)**

3.5.1 Install the new latch lever with hook (14) Установить новый рычаг с кулачком поз.14.

3.5.2 Install back the latch handle (2).

3.5.3 Install back and tighten with Allen key the screw (1).

3.5.4 Check dimension 2 mm as shown on View H.

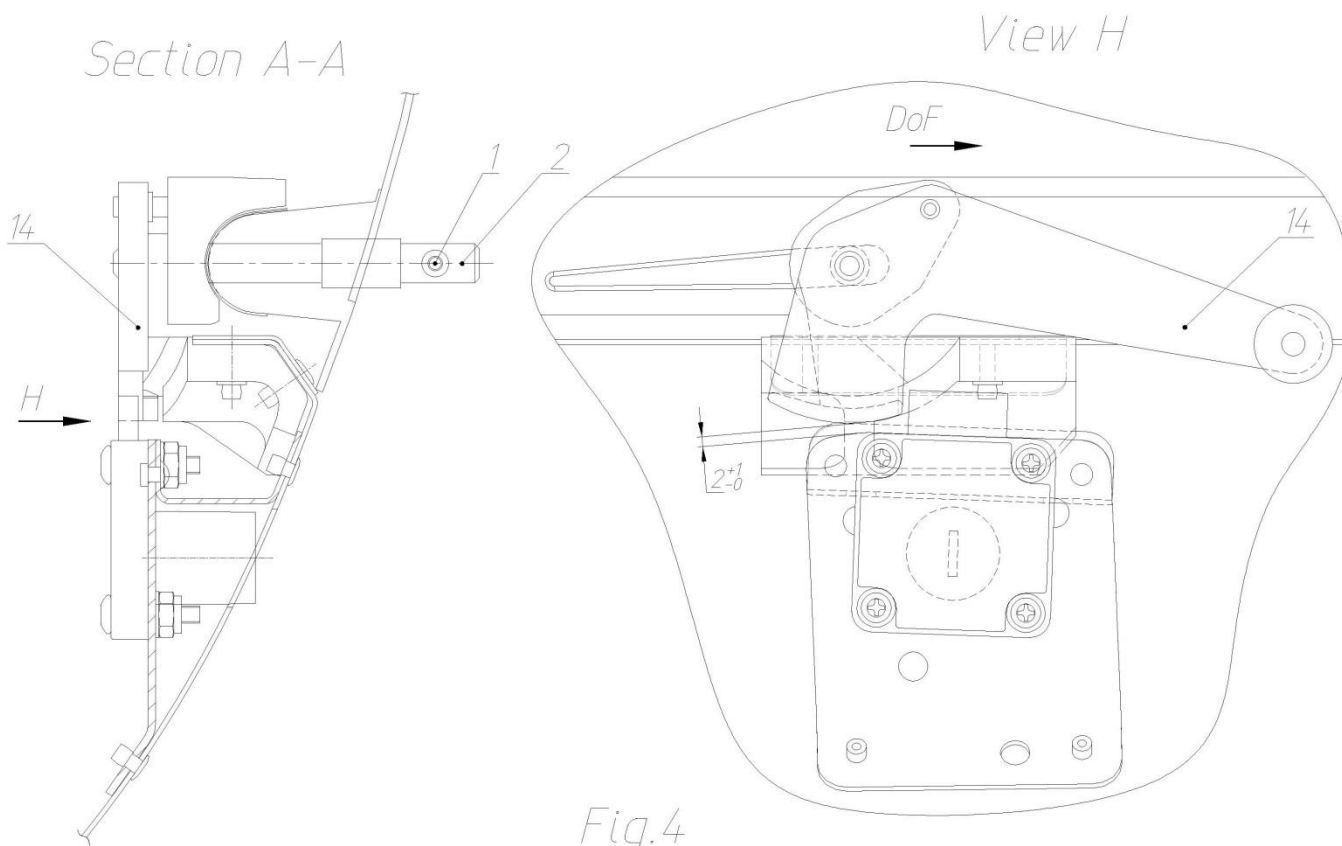


Fig.4

Fig. 4

◆ **NOTE:** All drawings above show the left latch. Right latch – mirrored view.